

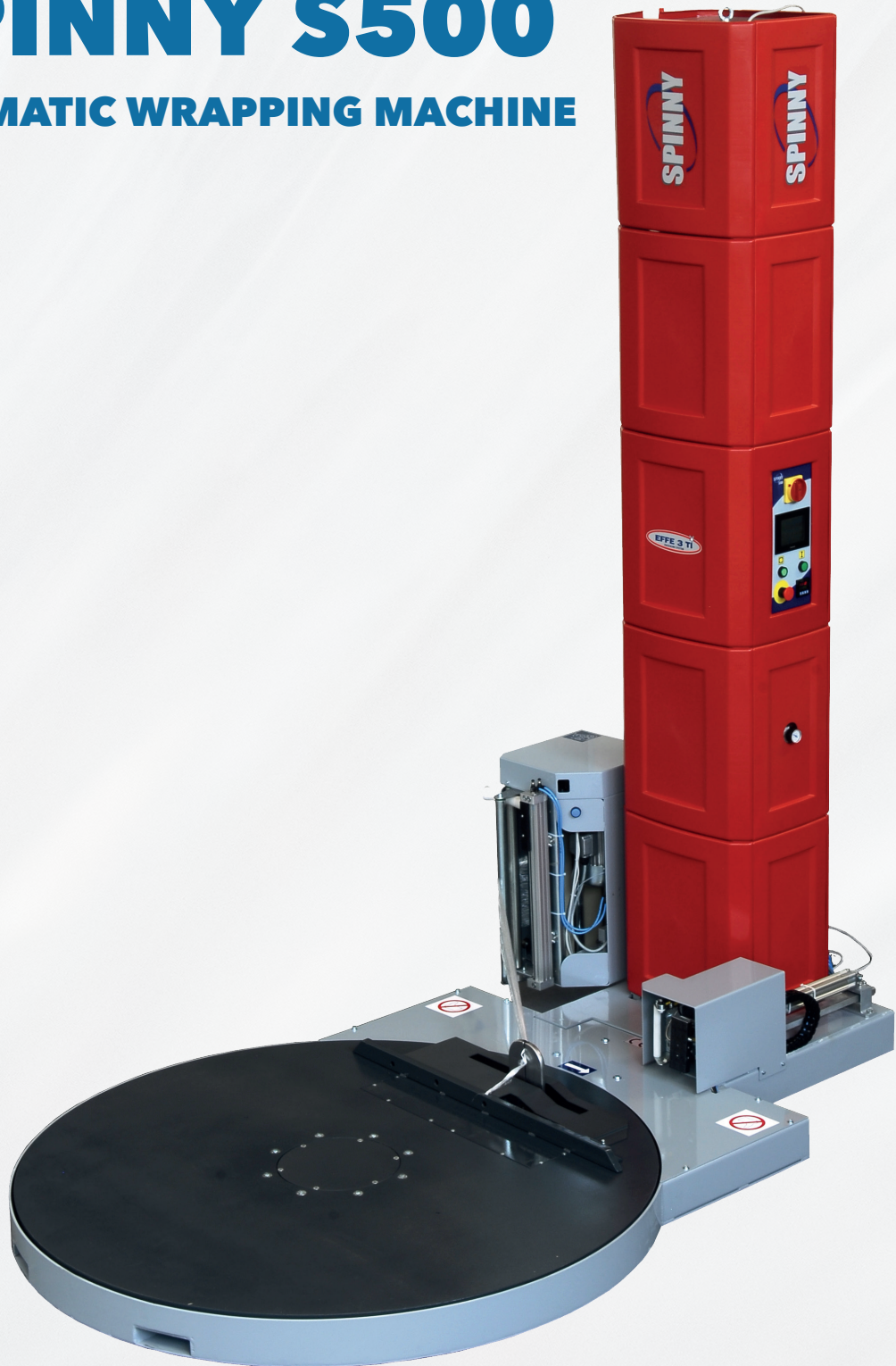


EFFE 3TI
PACKAGING TECHNOLOGIES

PROTECTING YOUR PRODUCTS ... AN EASY GAME

SPINNY S500

AUTOMATIC WRAPPING MACHINE



PACKAGING
TECHNOLOGIES
MADE IN ITALY



EFFE 3 TI srl | GATTINARA (VC) ITALY | Tel. +39 0163 828911 | Fax +39 0163 828990
info@effe3ti.com | www.effe3ti.com

EFFE 3 TI PRESENTS THE AUTOMATIC WRAPPING MACHINE

SPINNY S500

THE USER FRIENDLY, AFFORDABLE, RELIABLE AND FULLY CUSTOMIZABLE MACHINE WITH AUTOMATIC CUT & WELD SYSTEM.



MAIN FEATURES

Spinny S500, coming with touch-screen control panel with 10 wrapping programs, is equipped with motorized pre-stretch system that allows a sensible saving of film while wrapping.

- Pre-stretch up to 300%
- Pallet height (up to 2600 mm) detection with photocell
- Distance between column and turntable 500 mm
- Rotating table movement regulated by variable frequency drive from 5 to 15 rpm
- Rotating table stop in position controlled by sensor
- Variable speed of film carriage completely customizable
- Programmable reinforcing turns (upper and lower pos.)
- Working cycles controlled by PLC and electronic card
- Film carriage fall protection system
- Film reduction in rope
- Automatic cut & weld system

PRE-STRETCH SYSTEM = ECONOMIC ADVANTAGE

All models are equipped with an high-performance **MOTORIZED PRE-STRETCH SYSTEM**.

The power pre-stretch is a special device which allows the best utilization of the stretch film quantity; moreover, it permits to wrap light and unsteady pallets that couldn't be wrapped with different frictioning systems.

The stretch film is supplied in the right quantity by the rollers that are operated by a motor, which is controlled by an electronic system that measures the speed and keeps the film tension constant on the whole pallet's surface.

The motorized pre-stretch system, allows an efficiency of film up to **300%**.

FILM SAVING



SPINNY DUAL MOTOR GIVES YOU EVEN MORE!

The **DUAL MOTOR** version is designed to let you save even more film, obtaining more economic advantages.

Based on the same principle of the single motor version, with the **DUAL MOTOR** system, SPINNY S300 offers variable stretch factor up to **400%**!

FILM SAVING



SPINNY S500 IN-LINE

THE NEW SPINNY S500 WITH MOTORIZED ROLL CONVEYORS
FOR YOUR AUTOMATIC WRAPPING LINE.



SPINNY S 500 also in version IN-LINE!

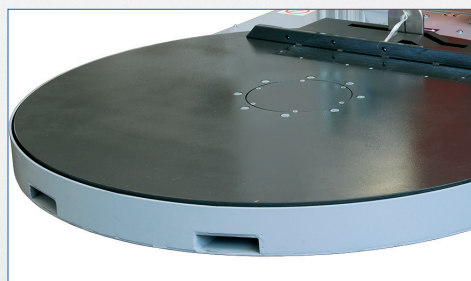
Equipped with motorized transport system on the rotating table, photocells for load controlling and separated control panel.

SOME OF THE MANY POSSIBILITIES OF CUSTOMIZATION:

- Motorized or pneumatic press
- Rotating table **1800 mm** for 1200x1200 mm loads
- Wrapping up to **3100 mm** pallet height
- Cycle start with **remote control**

CALL US
+39.0163.828911

or visit our Website
www.effe3ti.com



TECHNICAL DATA

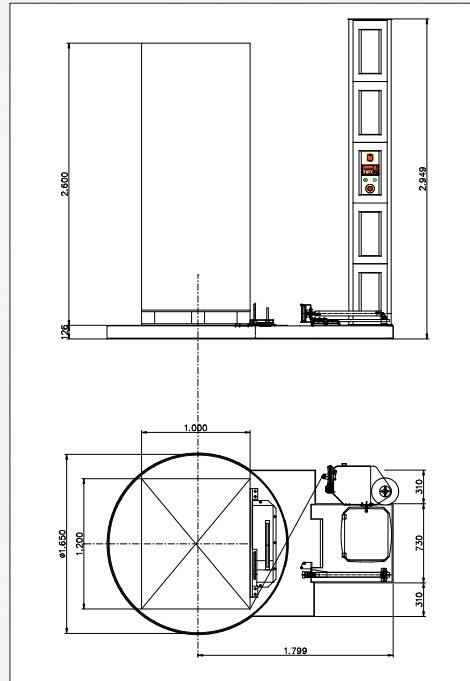
- The standard machine is designed to wrap palletted loads with stretch plastic film having the dimension up to 1200 mm (L) X 800 mm (W), with a load capacity of 1200 kg.
- The turntable is also available with a diameter of 1500 mm, 1650 mm, 1800 mm and 2200 mm with a load capacity of 2000 kg.
- The column can be furnished to wrap pallets with heights of 2100 mm, 2600 mm and 3100 mm.
- Table rotation speed and film carrier speed are regulated by inverter (turntable can rotate at a speed from 5 to 10 RPM).

ELECTRICAL SUPPLY

- Tension: 230 V single phase or, on demand, 400-415 V triple phase $\pm 10\%$
- Frequency: 50 Hz
- Installed power: 1,3 kW
- Auxiliary energy supply: 24 V DC

FILM (LLDPE) AND COIL CHARACTERISTICS

- Thickness: 15 \div 40 μm
- Advised thickness: 20 μm
- Internal coil diameter: 76 mm
- Height: 500 mm
- Maximum film roll weight: 16 kg
- Maximum external coil diameter: 250 mm



You Tube



www.effe3ti.com

www.youtube.com/effe3ti
www.facebook.com/effe3ti

